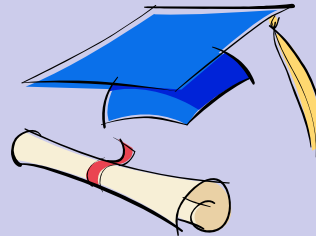


FREQUENTLY USED CONTACTS FOR GRADUATING SENIORS

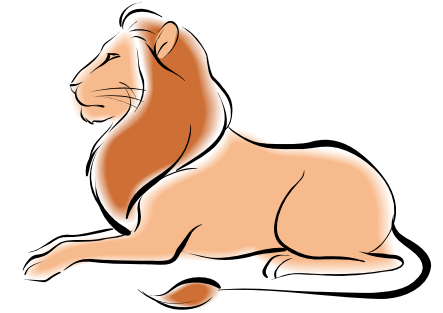
Arcadia University – www.arcadia.edu
Art Institute – www.artinstitutes.edu
Camden County College – www.camdencc.edu
College of New Jersey – www.tcnj.edu
Culinary Institute of America – www.ciachef.edu
DeVry Institute – www.nj.devry.edu
Dickinson College – www.Dickinson.edu
Drew University – www.drew.edu
Drexel University – www.drexel.edu
Fairleigh Dickinson University – www.fdu.edu
Gettysburg College – www.Gettysburg.edu
Gloucester County College – www.gccnj.edu
Holy Family – www.hfc.edu
Lafayette College – www.Lafayette.edu
LaSalle University – www.lasalle.edu
Monmouth University – www.Monmouth.edu
Montclair State University—www.Montclair.edu
N. J. Science & Technology University—www.njit.edu
Omega Institute—www.omegacareers.com
Penn State University—www.psu.edu
Pennco Tech—www.penncotech.com
Philadelphia University—www.phila.edu
Ramapo College—www.Ramapo.edu
Richard Stockton College—www.Stockton.edu
Rider University—www.rider.edu
Rowan University—www.rowan.edu
Rutgers University—www.Rutgers.edu
Seton Hall University—www.shu.edu

St. Joseph's University—www.sju.edu
Tech Institute of Camden County—www.ccts.info
Temple University—www.temple.edu
University of Delaware—www.udel.edu
University of Penn—www.upenn.edu
University of the Arts—www.uarts.edu/ug
University of the Sciences—www.usip.edu
Villanova University—www.villanova.edu
Wesley College—www.wesley.edu/admissions
West Chester University—www.wcupa.edu
Widener University—www.widener.edu
William Paterson University—www.wpunj.edu
York College—www.ycp.edu



Collegeanswer.com
Collegeboard.com
Fafsa.ed.gov
Fastweb.com
Finaid.org
N.J. Edge—www.njedge.org (NJ colleges/universities)
N.J. Higher Ed Student Assist Auth—www.hesaa.org
N.J. Transfer—www.njtransfer.org
NCAA (Academics & Athletics) - www.ncaa.org
NCAA Clearinghouse—www.eligibilitycenter.org
Nextstepmagazine.com
www.Campustours.com
www.goarmy.com or info.goarmy.com/km 115
www.myplan.com

Gloucester City Jr.-Sr. High School



Student Grade Point Average An Overview

GUIDANCE DEPARTMENT
856-456-7000

Dept. Head: Mr. Sean Gorman ext. 1517
Counselor: Mrs. Joye Adair ext. 1518
Counselor: Mr. Joseph DiPatri ext. 1545
Secretary: Mrs. Roxanne Reinhart ext. 1519

What is a student grade point average?

The student's grade point average is the average of all grades earned by the student for all credited course work taken in high school.

What is the purpose of the grade point average?

The grade point average is used for ranking students for graduation, for entrance into the National Honor Society in grades 11 and 12, for applications for college admission, technical school admission, military acceptance, scholarships and employment.

When is the student's grade point average calculated?

Twice a year for Juniors and Seniors as follows: after completion of the first semester and after completion of the second semester.

Numerical values for grade points are as follows:

Level IV Courses

All Advanced Placement Courses

The grade points are:

A=7, B=6, C=5, D=4, F=0

Level III Courses

All Honors Courses and World Language III, IV

The grade points are:

A=6, B=5, C=4, D=3, F=0

Level II Courses

College English I-IV, Art IV, Portfolio Prep, Band IV, Chorus IV, Graphic Com III, College Biology, Physics, Chemistry, Calculus, College US History I & II, World History/Cultures, Intro to Social Sciences, Law & Public Safety I & II, Sociology, American Fed Government, Spanish I & II, College Algebra I & II, Pre-Calc/Trigonometry, Integrated Adv Math, College Geometry, Economics, Integrated Natural Science

The grade points are:

A=5, B=4, C=3, D=2, F=0

Level I Courses

All subjects excluding Courses listed in Levels II, III, IV

The grade points are:

A=4, B=3, C=2, D=1, F=0

How is it calculated?

It is a weighted grade point average. It is weighted to give more points towards those courses which require rigorous assignments such as research papers for college level and/or advanced placement curriculum. Both the student's grade in the course and the level of the course determine the calculation. Grades are based on the student handbook numeric scale as follows:

A = 92-100 C = 74-82

B = 83-91 D = 65-73

F = Below 65

For Example:

An A in AP Calculus, Level IV, would be—7 grade points x 5 credits = 35 grade points.

An A in Calculus, Level II, would be—5 grade points x 5 credits = 25 grade points.

This procedure is done for each course.

An example of how to determine the GPA of a sample student for a completed school year is listed below.

Course	Grade Earned	Level	Grade Point	X Credits	= Total Grade Points
Spanish IV	A	III	6	5	30
College Eng IV	B	II	4	5	20
Calculus	B	II	4	5	20
AP World History	A	IV	7	5	35
Intro Soc Sci	A	II	5	5	25
Phys Ed	B	I	3	3	9
Health	A	I	4	1	4
Honors Physics	A	III	6	6	36
			39	35	179

179 total grade points divided by 35 credits equals a GPA of 5.114.

This process is completed for each year the student is in high school. The numbers from each year are totaled and averaged. This number is the student's cumulative GPA.